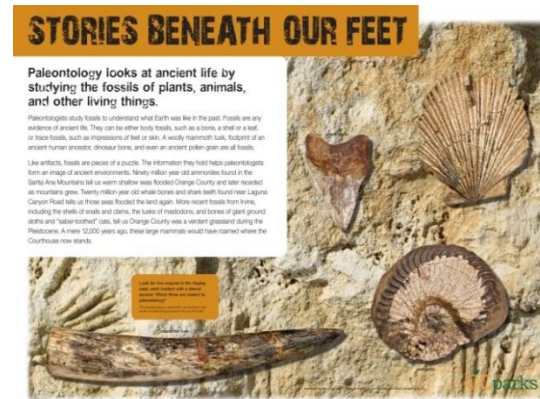


Orange County Old Courthouse Santa Ana, California

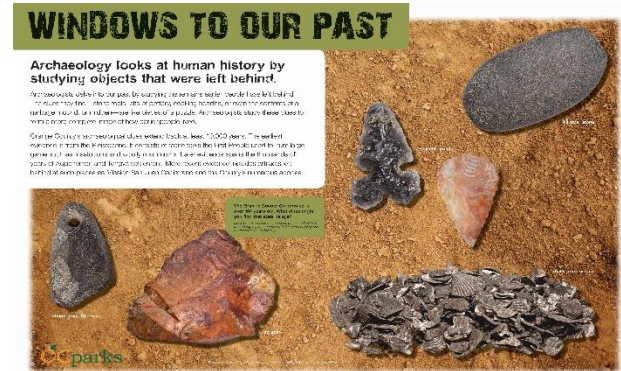
In 2010 The Acorn Group created a series of interpretive panels on Orange County's remarkable cultural and natural history.



Intent on showcasing the region's rich fossil record, and culture and traditions of the Acjachemen, we worked closely with archaeologists at the John D. Cooper Archaeological and Paleontological Center and tribal elders at the Blas Aguilar Adobe Acjachemen Cultural Center in the selection of images that best support the panels' messages.



The panels hang in the museum in the Old Courthouse, positioned above glass cases that display artifacts and fossils.



The project required sifting through fossils in the research lab, artifacts in the Blas Aguila Adobe, and historical documents and photographs at the San Juan Capistrano Historical Society.